



British Society for Immunology

**CIPN**

Clinical Immunology Professional Network

# Strategic plan 2024 – 2027

# Introduction



## About the BSI-CIPN

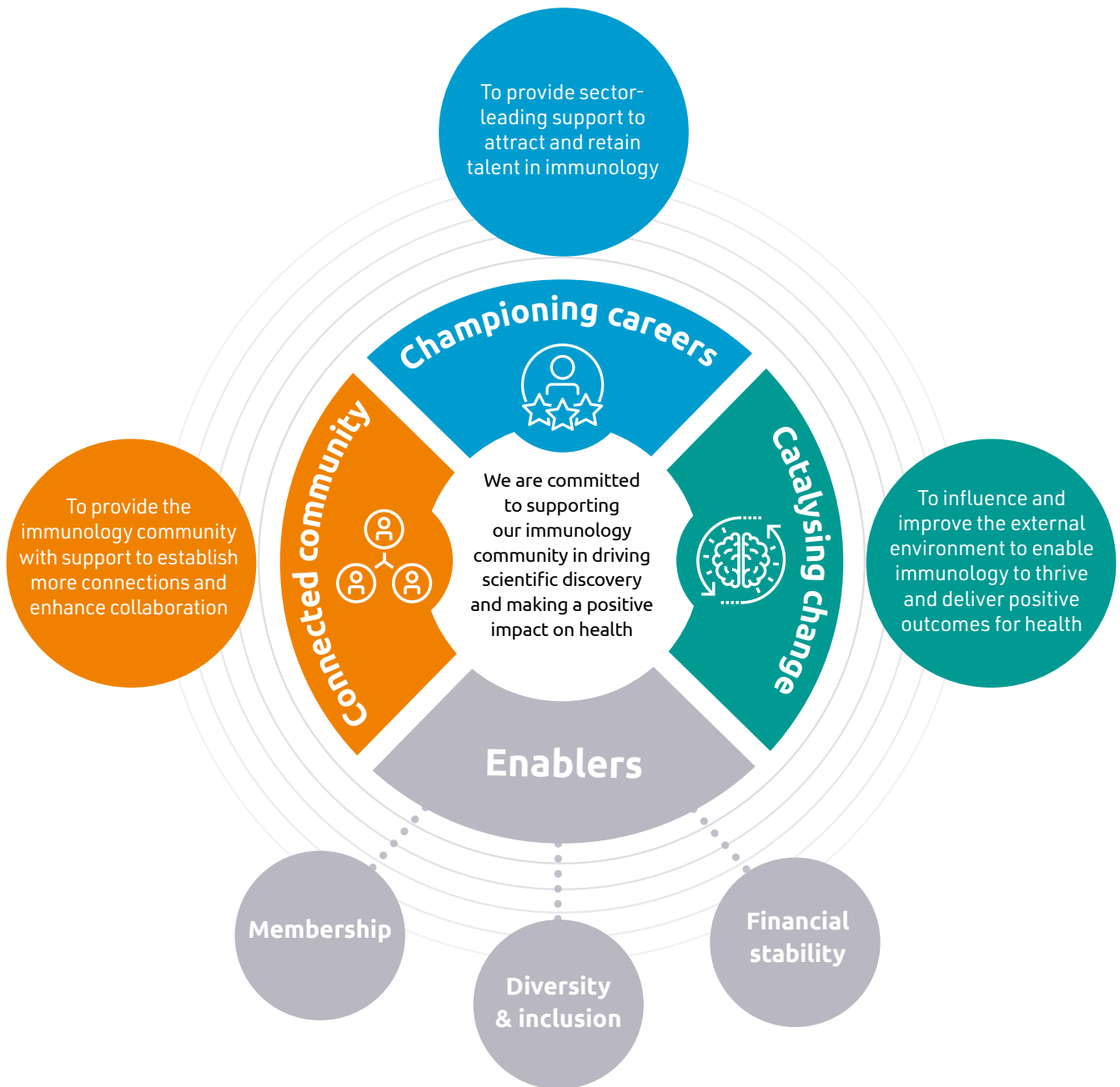
**The British Society for Immunology Clinical Immunology Professional Network (BSI-CIPN) is an integrated and impactful professional network for individuals working within clinical immunology.**

The network includes over 150 professionals working in the clinical immunology field, including consultant clinical immunologists, allergists, healthcare scientists, pharmacists and specialist nurses.

The BSI-CIPN was established in 2023 and recognised the need to develop a comprehensive strategic plan to guide its work. The BSI-CIPN Steering Group came together in March 2024 to define the vision for the BSI-CIPN and agree strategic priorities for 2024–2027.

They align to the BSI's wider strategic priorities, which focus on championing careers, catalysing change and connecting the immunology community, and will be delivered through our value framework: ambitious and committed, evidence-based and responsible, collaborative and inclusive, agile and energetic.

# The BSI's strategic priorities



# About clinical immunology



## What is clinical immunology?

The focus of clinical immunology practice in the UK is on understanding, diagnosing and treating primary and secondary immunodeficiencies, allergies, and autoimmune and autoinflammatory disorders. The scope of the practice and research continues to evolve, driven by expanding use of immune-based therapies in conditions such as cancer.

As we come to understand more about the immune system, the role immunology plays in the diagnosis and management of a vast number of health conditions also becomes ever clearer. We are developing a better understanding of how immune responses contribute to the development of many common disorders not traditionally viewed as immunological, including metabolic, cardiovascular and neurodegenerative conditions such as Alzheimer's.

As the BSI expands its clinical focus, we hope to make a difference to these patients and to help fulfil the vision of the BSI - 'better health for all through immunology'.

## Which healthcare professionals are involved?

There are many different professionals involved in the care of patients with immunological conditions. In primary care settings, this could be GPs, nurses or pharmacists, or other professionals working in the community, such as dietitians.

In specialist settings, there is a team of professionals involved, led by one or more clinical immunologists and/or clinical scientists. The team includes clinicians specialising in immunology and/or allergy, including doctors, healthcare scientists, nurses, and pharmacists. Where appropriate, clinicians working in other specialties, such as rheumatology or oncology, may also be involved in diagnosis, treatment and care planning.

The specialist services may take input from other members of the multidisciplinary team, including psychologists or genetic counsellors, and allied healthcare professionals such as dietitians and respiratory physiotherapists.



---

*'The field of clinical immunology is of growing importance, and it plays a critical role in treating and understanding a vast breadth of conditions. This strategic plan for BSI-CIPN will help us drive forward our work to make a difference and improve patient care.'*

**Professor Sinisa Savic**

Chair of the BSI-CIPN

# BSI-CIPN mission



The mission of the BSI-CIPN is:

**Leading delivery of excellence in patient care in clinical immunology, through:**

**Education  
and  
training**

**Advocacy  
and  
engagement**

**Research**

# BSI-CIPN principles



The BSI-CIPN will be seen as the 'go to' organisation for matters relating to clinical immunology, and will work towards its mission by applying the following principles to its work and activities:

- **Raising the UK profile of clinical immunology** through sharing insight and stories, demonstrating what can be achieved for patients through the application of research and excellence in clinical practice.
- **Working across all disciplines in clinical immunology with relevance across all career levels.** The BSI-CIPN will ensure that its activities are balanced across these disciplines and professional groups and will support members to network, build their skills and strategically collaborate to maximise impact.
- **Playing a convening role with partner organisations,** and bringing forward new partnership opportunities with organisations from different sectors including charities, academia, industry and professional bodies. The BSI-CIPN will encourage and support the link between research and clinical practice in immunology.
- **Attracting a diverse membership,** representative of all roles and interests within clinical immunology. Membership should be inclusive of the wider immunology community, in line with the BSI Diversity and Inclusion Framework, as well as including representation from the UK devolved nations.
- **Delivering a demonstrable impact for clinical immunology** and driving targeted and tangible programmes of work that make a difference and add value.



## Education and training

**By 2027, we will have facilitated new educational opportunities to improve and standardise clinical immunology and allergy training relevant to all professional groups.**

We will do this by:

- Continuing to develop and extend the reach and impact of the BSI-CIPN Conference, the leading UK event for all professional groups working and training within clinical immunology and allergy.

- Providing collaborative education opportunities, in partnership with key organisations, to enable trainees within clinical immunology across professional groups to achieve their educational goals.
- Developing educational content on immunology basic science for clinical professionals to support a broader understanding within services.
- Driving forward work on immunology-related clinical guidelines to ensure that relevant clinical guidelines capture the latest evidence and best practice to improve patient care.





---

## Advocacy and engagement

**By 2027, we will have identified and delivered on work to increase the prioritisation of clinical immunology within the four UK health systems, through collaborating with partners, patients and the public.**

We will do this by:

- Facilitating the growth of the BSI-CIPN to increase our reach into the clinical immunology community, and supporting communication and engagement within the network.
- Integrating patient and public involvement (PPI) into BSI-CIPN work by connecting the BSI-CIPN and BSI PPI strategic plans, and facilitating links with patient organisations and the wider patient community.
- Working with partner and peer organisations to influence UK policy and strategy on clinical immunology by demonstrating the importance of investment and prioritisation of the discipline within national and devolved nation healthcare planning and delivery.
- Working with partner and peer organisations to identify and deliver on wider opportunities for influencing, for example on wider healthcare reforms and with relevant medical specialties.
- Developing targeted influencing work to support and grow the clinical immunology workforce across all professional groups.



## Research

**By 2027, we will have built better links between the academic and clinical immunology research communities, and facilitated opportunities for immunology research to positively impact clinical practice.**

We will do this by:

- Forging links between the academic and clinical research communities to develop new collaborative opportunities – building on BSI strategic priorities in research – and facilitating networking opportunities wherever possible.
- Supporting the translation and communication of science and research to the clinical community on key issues to help impact clinical practice.
- Building strengthened links between the BSI-CIPN and the BSI journals.
- Promoting and showcasing immunology research within early medical, nursing and scientific careers, with a view to supporting the next generation of clinical academics.

# Thank you



## The BSI-CIPN Steering Group

The BSI-CIPN Steering Group has led and supported the growing network since it was established in 2023. They have been integral in the development of this strategic plan, and have been committed to putting forward the views of the wider clinical immunology community. We will work closely with the Steering Group to drive the delivery of this strategic plan, and we thank them for their support and commitment.

## The wider BSI-CIPN membership

The work of the BSI-CIPN would not be possible without its wider membership, which continues to grow. We thank the wider membership for their expertise, dedication and commitment to the field of clinical immunology, and look forward to the part they will play in the implementation of this strategic plan.

## Our partners and supporters

Working with our partners and other organisations is key to the success of the BSI-CIPN. We would like to thank all our partners and supporters, and look forward to furthering our collaboration in the future.

Inspired by what you've heard?

**Join the BSI-CIPN community**

Find out more about the BSI-CIPN and our membership and partnership opportunities.  
[www.immunology.org/cipn](http://www.immunology.org/cipn)

Email: [cipn@immunology.org](mailto:cipn@immunology.org)

 [@BSI\\_CIPN](https://twitter.com/BSI_CIPN)

**The British Society  
for Immunology's  
mission is to support  
our immunology  
community in driving  
scientific discovery  
and making a positive  
impact on health.**

British Society for Immunology

9 Appold Street

London

EC2A 2AP

[www.immunology.org](http://www.immunology.org)

✉ [@britsocimm](https://twitter.com/britsocimm)

Registered charity: 1043255 in England and Wales; SC047367 in Scotland

Registered in England and Wales as company: 3005933