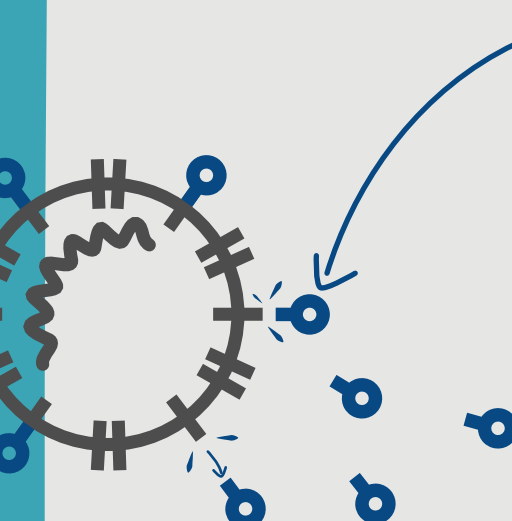


Protein vaccines

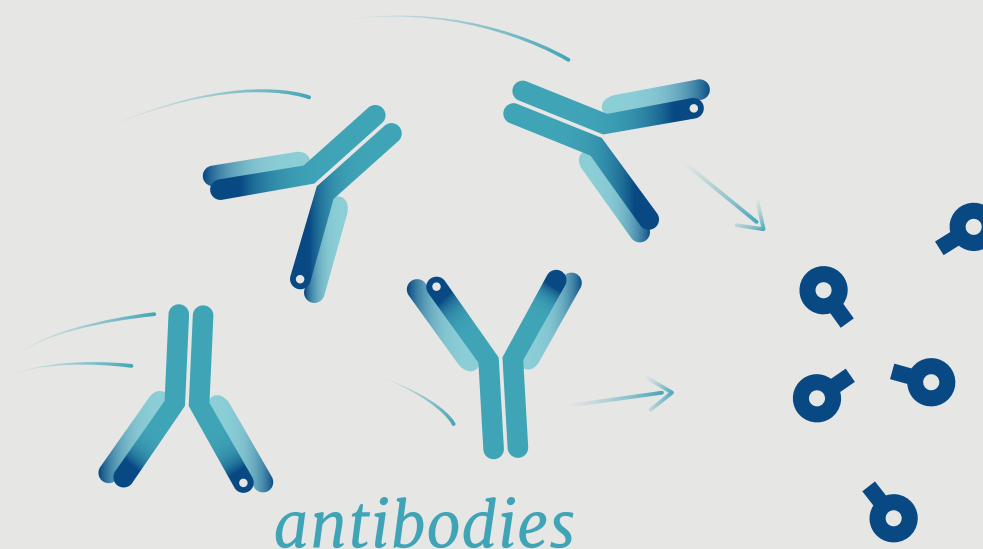
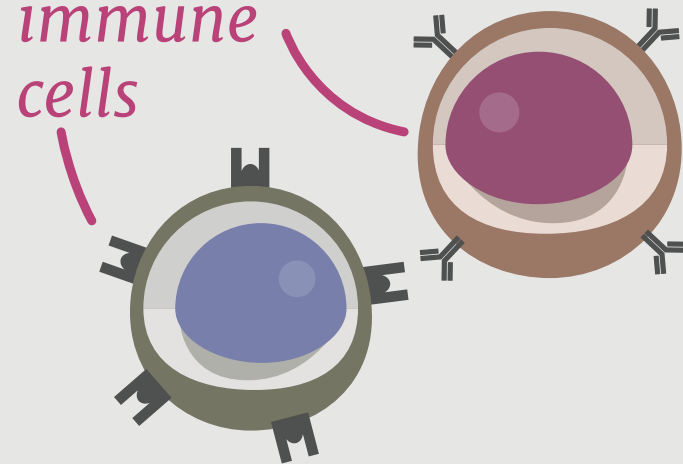


Contain **proteins** from the SARS-CoV-2 virus, which are recognised by the immune system to trigger a response.

Can be whole proteins, protein fragments, or many protein molecules packed into nanoparticles.

This response builds immune memory, so your body can fight off SARS-CoV-2 in future.

immune cells



Considerations

Have good previous safety records.



Usually administered with an adjuvant to boost immune response.



Examples in human use for other diseases

Hepatitis B vaccine

In clinical trials for COVID-19

Novavax, Sanofi/GSK